



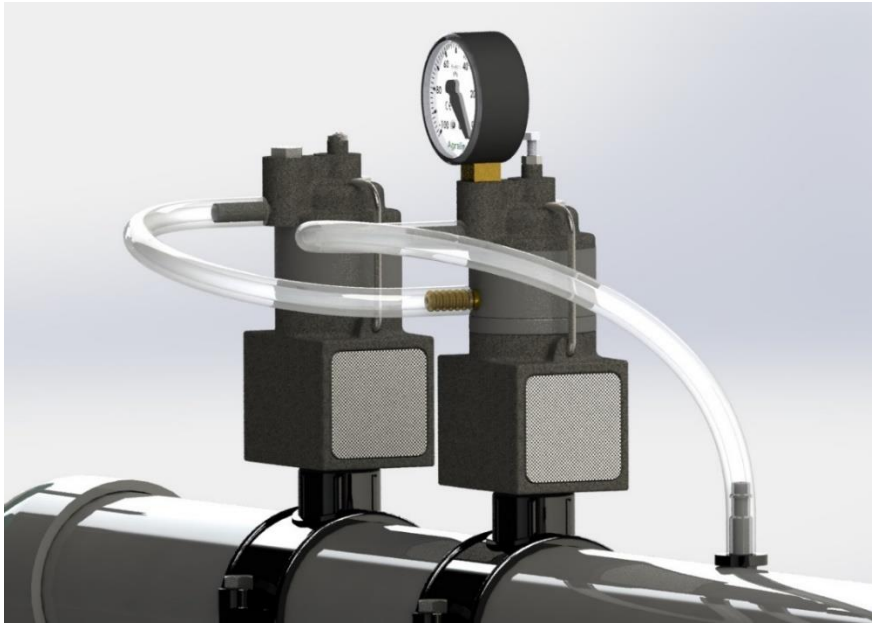
TARIMTAŞ

TARIM ARAÇLARI SANAYİ VE TİCARET A.Ş.



SÜTZER

**AUTOMATIC
VACUUM REGULATOR
USER GUIDE AND MAINTENANCE
MANUAL**



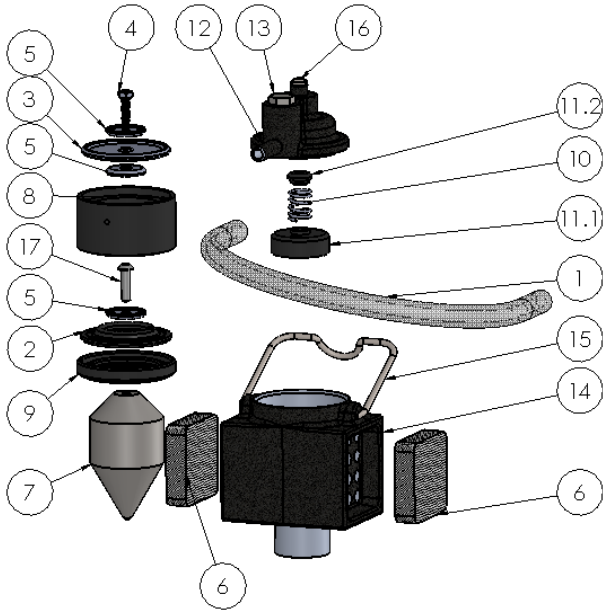
Tarımtaş Quality Document

VACUUM (AUTOMATIC VACUUM REGULATION) (PARTS DEFINITION (Code No.153-72-1029-B & C) USER GUIDE AND MAINTENANCE MANUAL

Vacuum adjustment range: 35-60 kPa **Capacity:** Over 2200 l/min @ 50 kPa

VACUUMMATIC continuously regulates the vacuum level that is required for milking.
(Default vacuum adjustment is 45 kPa)

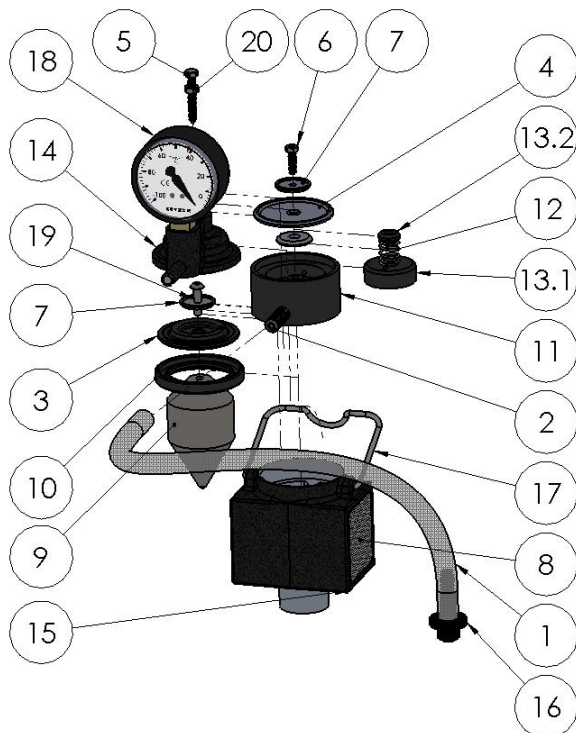
For capacities over 2200 l/min two different vacuum regulator is used together.



153-72-1029-C
VACUUM REGULATOR 325 MODEL BLIND

| NO. | PART NUMBER | PART NAME | QUAN |
|------|-----------------------------------|------------------------------|------|
| 1 | 153-71-1037 | 6,5X12 PVC HOSE | 1 |
| 2 | 153-72-1089 | DIAPHRAM WITH HOLE | 1 |
| 3 | 153-72-1090 | VACUUMMATIC FLAT MEMBRANE | 1 |
| 4 | 153-72-1099 | VACUUMMATIC ADJUSTMENT SCREW | 1 |
| 5 | 153-72-1100 | MEMBRANE WASHER PLS | 3 |
| 6 | 153-72-1101 | FILTER | 2 |
| 7 | 153-72-1102 | VACUUMMATIC WEIGHT | 1 |
| 8 | 153-72-1103-A | MEMBRANE HOLDER UPR | 1 |
| 9 | 153-72-1103-B | MEMBRANE HOLDER LWR | 1 |
| 10 | 153-72-1104 | VACUUMMATIC SPRING | 1 |
| 11.1 | 153-72-1105-01 | SPRING BEDDING LWR | 1 |
| 11.2 | 153-72-1105-02 | SPRING BEDDING UPR | 1 |
| 12 | 153-72-1106 | VACUUMMATIC COVER | 1 |
| 13 | 153-72-1111 | ST ST PLUG 1/4" | 1 |
| 14 | 153-72-1126 | VACUUM REGULATOR BODY LWR | 1 |
| 15 | 153-72-1129 | REGULATOR COVER SPRING | 1 |
| 16 | DIN EN ISO 7045 - M5 x 8 - Z - 8N | | 1 |
| 17 | M5x20-SOC-BUT-ZP | | 1 |

Picture 1



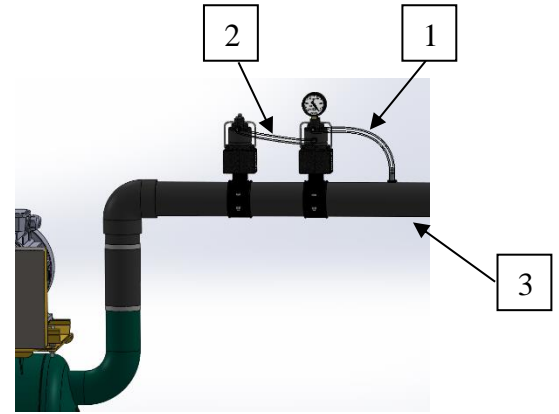
153-72-1029-B
VACUUM REGULATOR 325 MODEL SÜTZER

| NO. | PART NUMBER | PART NAME | QUAN |
|-----|------------------|---------------------------------|------|
| 1 | 153-71-1037 | 6,5X12 PVC HOSE | 1 |
| 2 | 153-72-1041-09 | NIPPLE | 1 |
| 3 | 153-72-1089-A | DIAPHRAM WITH HOLE | 1 |
| 4 | 153-72-1090 | VACUUMMATIC FLAT MEMBRANE | 1 |
| 5 | 153-72-1098 | ADJUST SCREW | 1 |
| 6 | 153-72-1099 | VACUUMMATIC ADJUSTMENT SCREW | 1 |
| 7 | 153-72-1100 | MEMBRANE WASHER PLS | 3 |
| 8 | 153-72-1101 | FILTER | 2 |
| 9 | 153-72-1102 | VACUUMMATIC WEIGHT | 1 |
| 10 | 153-72-1103-B | MEMBRANE HOLDER LWR | 1 |
| 11 | 153-72-1103-C | MEMBRANE HOLDER UPR WITH NIPPLE | 1 |
| 12 | 153-72-1104 | VACUUMMATIC SPRING | 1 |
| 13 | 153-72-1105 | VACUUMMATIC SPRING BEDDING | 1 |
| 14 | 153-72-1106 | VACUUMMATIC COVER | 1 |
| 15 | 153-72-1126 | VACUUM REGULATOR BODY LWR | 1 |
| 16 | 153-72-1127 | VACUUM REGULATOR NIPPLE | 1 |
| 17 | 153-72-1129 | REGULATOR COVER SPRING | 1 |
| 18 | 153-75-1001 | VACUUM GAUGE Ø63 SÜTZER | 1 |
| 19 | M5x20-SOC-BUT-ZP | | 1 |
| 20 | M5 | | 1 |

Picture 2

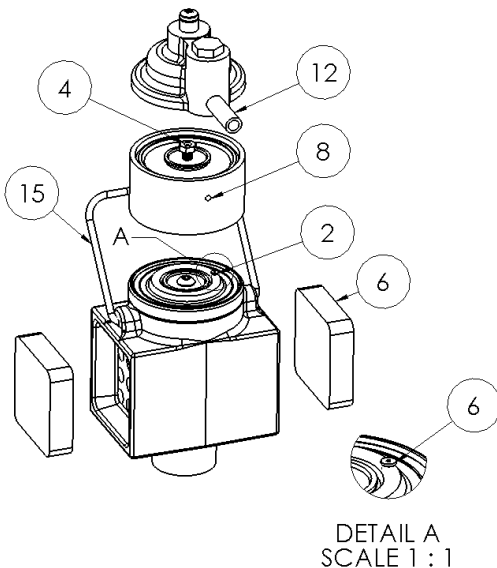
INSTALLATION OF VACUUMMATIC ON TO PIPE

Vacuummatic regulators are to be connected on to the main vacuum line(3) as shown in figure on the right. Both regulators shall be positioned as the vacuummeter on top and the thread at bottom, vertical to the ground level as much as possible. The hose (1) on the side of the vacuummatic with the gauge should be connected from top nipple to the vacuum line upstream according to the airflow direction. The hose (2) of the vacuummatic without a gauge shall be connected from its nipple to the lower nipple on vacuummatic with the gauge.

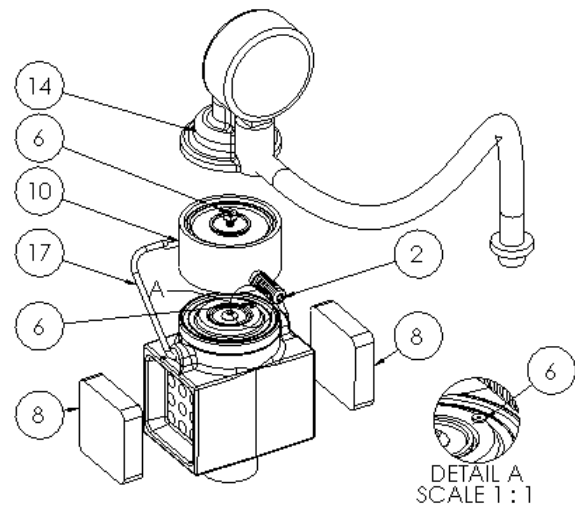


VACUUMMATIC CLEANING

- ⇒ Once a month, remove and clean the dust filters (8-Pic 4 & 6-Pic 3).
- ⇒ Rotate the main spring (15-Pic3 and 17-Pic4) and take the upper cover (12-Pic3 & 14-Pic4).
- ⇒ Clean the air holes (4Pic3 & 6Pic4) at the center of the wide membrane(8-Pic3 & 2-Pic4) and on the edge of the seat, the air hole of the narrow membrane (2-Pic3 & 6-Pic4) and the inner air hole on the pipe of cover (12-Pic3 & 14-Pic4).



Picture 3



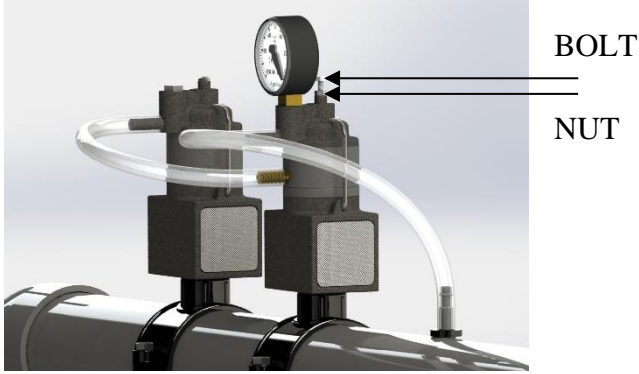
Picture 4

If the vacuum indicator shows a value different from 45 kPa when the machine is in operation, vacuum should be readjusted.

VACUUM ADJUSTMENT

Start up the machine and remove the plastic protection on the Vacuummatic cover.

- ⇒ Loosen the nut by using a spanner (See figure below).
- ⇒ Adjust the indicator to the desired vacuum level by turning the bolt to right or left.
- ⇒ Fix the vacuum by retightening the nut while holding the bolt. Replace the protection.



İMALATÇI FİRMA:



TARIMTAS

TARIM ARAÇLARI SANAYİ VE TİCARET A.Ş.

Deri Organize Sanayi Bölgesi Güderi Cad. No:8 F7 Özel
Parsel Tuzla / İSTANBUL

TEL: 0 216 394 06 75 & 394 06 88 FAKS: 0 216 394 01 20