



TARIMTAŞ

TARIM ARAÇLARI SANAYİ VE TİCARET A.Ş.



SÜTZER

AUTOMATIC COW BRUSH USER GUIDE & MAINTENANCE MANUAL



DEAR CUSTOMER,

⚠ Please read this document carefully and keep safe for use later before using the machine.

This guide is prepared for you to use the machine at the most efficient and safest way. Our products are designed for ease of use, efficiency and environment friendly criteria.

If you face with any problem which is not explained in this book please prepare necessary information specified below and keep in touch with us.

- A- Address, phone number, machine type & serial number,
- B- Brief detailed explanation of the problem as much as you can.

We need these information to understand the cause of issue.

We wish you to enjoy your machine.

**Machines which have unoriginal spare parts are out of warranty.
Office warranty period of the machine is 2 years.
Total lifecycle use of this machine is 10 years.**

MANUFACTURER:

TARIMTAŞ

TARIM ARAÇLARI SANAYİ VE TİCARET A.Ş.

IDOSB Güderi cad. No.8 F-7 Özel Parsel 34956 Tuzla/İSTANBUL

Tel: (0216) 394 0675 - (0216) 394 0688

Fax: (0216) 394 0120

E-mail : info@tarimtas.com , satis@tarimtas.com

Web : www.tarimtas.com

If we see any necessity, we reserve the right to make any change on dimension, material and production type of the products

This guide is prepared and distributed in order to be used with the cow brush with registered trademark of SÜTZER. It can not be copied, distributed or used for any other purpose.

CONTENTS :

PAGE NO

1. TECHNICAL INFORMATION..... 4

2. HEALTH & SAFETY PRECAUTIONS..... 4

3. INSTALLATION OF THE BRUSH 5

4. ELECTRIC CONNECTION SCHEME 6

5. CALIBRATION OF THE PRODUCT 6

6. PERIODIC MAINTENANCE..... 7

7. POSSIBLE PROBLEMS AND SOLUTIONS 7

8. SPARE PARTS 8

1. TECHNICAL INFORMATION



AUTOMATIC COW BRUSH

MOTOR POWER	0.18 kW
CURRENT-FREQUENCY	220 Volt (AC) - 50 Hz.
TRANSMISSION	Motor powered reduction gearbox
REVOLUTION	30 rpm
WEIGHT	50 kg
DIMENSIONS (W x D x H)	50x80x125 cm

2. HEALTH & SAFETY PRECAUTIONS

- Power connection of the brush must be done by an authorized electric technician.
- Follow the rules on electric installation diagram. See Figure 5
- Electric motor, control box and cables must be totally away from any sort of liquid.
- Make sure that ground line is properly connected to your product.
- Please do not operate and use the brush before having tail cut of your cows.
- Highest point of the product must be lower than 240cm from floor level.
- Lowest point of the brush must be higher than 90cm of floor level.

This product is design for use of adults. Please keep out of reach of children. Do not let children use or operate the product.

3. INSTALLATION OF THE BRUSH

Dimensions of the cow brush machine need to be as in Figure 2 below.

- Highest point of the machine must be below 240cm from floor level.
- Lowest point of brush must be above 90cm from floor level. (See Figure 2)
- From the center of brush 90 cm each front to back and 115 cm each left to right must be free of any obstacles for the brush to swing over easily as shown in Figure 1.

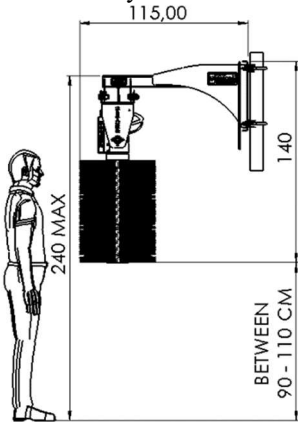


Figure 2

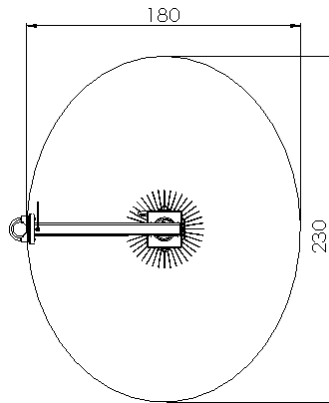


Figure 1

For installation;

- a. Cut tie rap and put U bolts, nuts and other connection pieces to a side. (5)
- b. Starting from the front ones, take out screws connecting the machine to palette.
- c. Unscrew the security bolt and nut (33).
- d. Attach the machine to the pole in the barn as shown in Figure 2 with the help of U bolts, reinforcement plates and nuts. Make sure that reinforcement plate flat side will face the back plate of brush frame. Teeth side will keep the pole. For wall attachment brush can be attached straight on to wall from the holes on back plate.
- e. Recheck that the safety bolt is disassembled.

Figure 4 – Detail B

f. Power connection need to be made as shown in **ELECTRIC CONNECTION SCHEME**



Figure 3

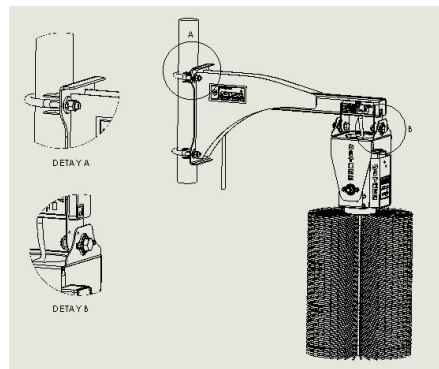


Figure 4

4. ELECTRIC CONNECTION SCHEME

⚠ Make sure that there is no damage on connection cables. Power connection shall be made by an authorized electric technician. **Ground line connection is a must for your own safety.** To protect the product from currency variation or any other sort of power problems use of overload protection switch is recommended. At least fuse need to be used. Below shown are some example schemes.

ELECTRIC CONNECTION EXAMPLE SCHEMES

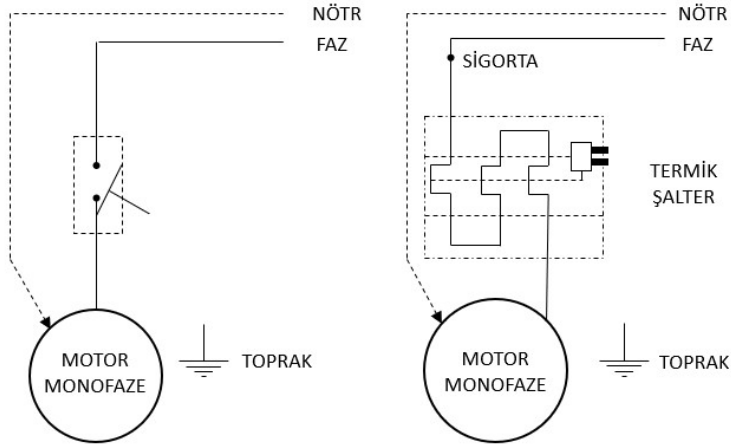


Figure 5

Make sure that fuse is on phase line.



5. CALIBRATION OF THE PRODUCT

After installation, machine must be calibrated for position before use. Calibration is a must. Otherwise it will not work properly.

One of the holes on the motor protection cover is for calibration and other for the led light showing the status of machine. After power connection and turning on the fuse or switch please press gently on the calibration button and keep it pressed until you see the orange light. Leave the button when you see the orange light. Brush will turn to one side, wait for two seconds and then to the other side. Wait for a while and green light will show up. Brush is calibrated after green light turns off. If you can not see green light and brush does not work properly please contact technical service.



Figure 6

6. PERIODIC MAINTENANCE

- Product need cleaning periodically. Protect motor and gearbox from any sort of liquid while cleaning.

Check cables every month. Make sure that there is no damage on cables and brush can move easily without any extra strain or pressure to the cables.

- Check brush every 6 months. If damaged call technical service for replacement with new one.
- It is recommended to replace the brush maximum every two years.

Our company is not responsible for damages caused by non-compliance with maintenance rules and incorrect use. In this case machine is not covered by warranty.

7. POSSIBLE PROBLEMS AND SOLUTIONS

- a. Brush does not rotate
 - i. Electric connections and cables to be checked by authorized electric technician.
 - ii. Check fuse and turn on if it is off.
 - iii. If light on the product is on, motor is running but brush does not turn please call for technical service.
- b. Product cause electric shock
 - i. Ground line is not connected properly. Call for authorized electric technician for connection of the ground line.
 - ii. Cables may be damaged. Check all cables and if damaged call authorized electric technician for replacement.
- c. Noisy run of the product
 - i. Side bolts of the front motor cover may be loose. Tighten side screws of the front motor cover. If bolts are completely lost please use M6x30 bolt.
 - ii. Gearbox or motor may be damaged. Call for authorized technical service.

If any other problem occurs other than the ones listed above call for authorized dealer or manufacturing factory for service.

8. SPARE PARTS

153-78-1020 Brush

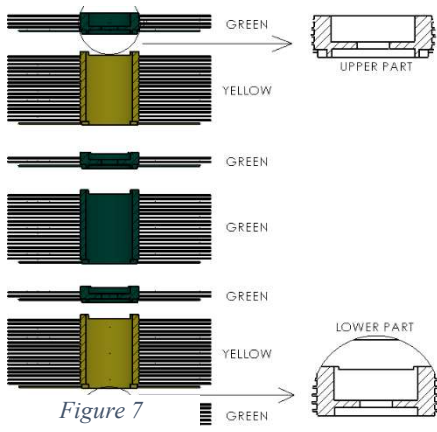


Figure 7

Brush consists of 7 pieces as shown in Figure 7. Need replacement every 2 years.

For replacement

1. Remove power connection of the machine.
2. Remove nut and the plate underneath the brush and then the brush pieces one by one.
3. "New brush is to be installed on to the center profile one by one in the same correct sequence. Please take into care that top and bottom pieces are different than each other. After installing last piece there must be 5 mm from profile to the be something wrong on the sequence of brushes. Recheck sequence.
4. Plate(2) and nut(1) are to be tightened as before.

153-78-1053 – ELECTRONIC CONTROL CARD

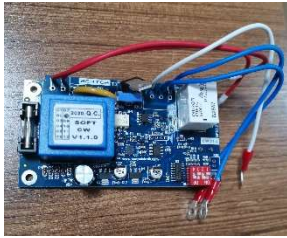


Figure 8

In order to change the control card

- first you need to take out the motor protection cover (1) as shown in **Hata! Başvuru kaynağı bulunamadı..**
- Then there is the control card under the plastic cover No.2. Take out the screws of cover (2).
- Unscrew the card remove cables and replace with new one.
- Connect all cables as shown in Figure 10

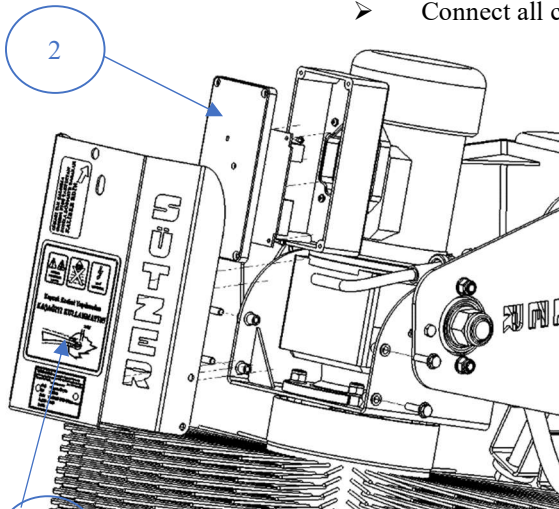


Figure 9



Figure 10

ZİRMAK

ZİRAAT MAKİNALARI
TİCARET VE SANAYİ A.Ş.

Organize Desi San.Bölgesi Güderi cad.

No:8 F7 Özel Parsel Tuzla – İstanbul

Tel : (0216) 394 06 75 – (0216) 394 06 88 – (0216) 394 19 43

Fax : (0216) 394 01 20 – (0216) 394 22 59

www.tarimtas.com

info@tarimtas.com